

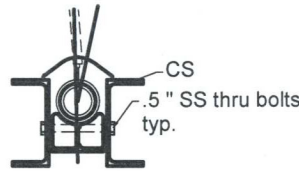
Specifications: 8000 # thru 54,000 # Boat Lift

Note: Cable strength based on 20% of the rated breaking strength of a new cable.

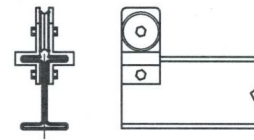
Capacity	8000 #	10000 #	13000 #	16000 #-4P	16000 #-6P	20000 #	24000 #	27000 #	35000 #	40000 #	54000 #
" A " Beam Length	12' - 6"	12' - 6"	12' - 6"	12' - 6"	15'	15'	15'	15'	72"	72"	72"
Drive Shaft	Schedule 40	Schedule 40	Schedule 40	Schedule 40	Schedule 40	Schedule 80	Schedule 80	Schedule 80	Schedule 40	Schedule 40	Schedule 40
Driveshaft O.D. X I.D.	1.9 x 1.61	1.9 x 1.61	1.9 x 2.375	1.9 x 2.375	1.9 x 2.375	1.9 x 1.5	1.9 x 1.5	1.9 x 1.5	2.375	2.375	2.375
Cable dia. Work Load	.313"	.313"	.313"	.313"	.313"	.313"	.375"	.375"	.375"	.375"	.375"
Cable Length	16'	31'	31'	31'	31'	31'	31'	31'	31'	31'	31'
Cable Configuration	1 Part	2 Part	2 Part	2 Part	2 Part	2 Part	2 Part	2 Part	2 Part	2 Part	2 Part
" CS " Channel Section	5" @ 2.212 #/ft	6" @ 2.834 #/ft	7" @ 3.205 #/ft	7" @ 4.715 #/ft	7" @ 3.205 #/ft	7" @ 4.715 #/ft	7" @ 4.715 #/ft	9" @ 4.983#/ft	7" @ 4.715#/ft	7" @ 4.715 #/ft	7" @ 4.715 #/ft
I Beam Section	6 by 4 @ 4.7 #/ft	8 by 5 @ 6.181#/ft	8 by 5 @ 7.023 #/ft	10 by 6 @ 8.646#/ft	10 by 6 @ 10.29 #/ft	10 by 6 @ 10.29 #/ft	10 by 6 @ 10.29 #/ft	12 by 7 @ 14.29 #/ft	10 by 6 @ 10.29 #/ft	12 by 7 @ 14.29 #/ft	12 by 7 @ 14.29 lbs/ft
I Beam Length	11'	12'-6"	12'-6"	14'	16'	16'	16'	16'	18'	18'	18'
Worm Cap. & Config.	2 @ 3500# (Belt)	2 @ 3500# (Belt)	2 @ 4500# (Belt)	2 @ 4500# (Belt)	2 @ 7000# (Belt)	2 @ 7000# (Belt)	2 @ 8500# (Belt)	2 @ 8500# (Belt)	4 @ 7000# (Belt)	4 @ 7000# (Belt)	4 @ 8500# (Belt)
Drive HP	2 @ 3/4 or 1HP	2 @ 3/4 HP.	2 @ 3/4 or 1 HP.	2 @ 1 HP.	2 @ 1 HP.	2 @ 1 1/2 HP.	2 @ 1 1/2 HP.	2 @ 1 1/2 HP.	4 @ 1 HP.	4 @ 1 HP.	4 @ 1 1/2 HP.
Min. Piling Size	8 in. dia	10 in. dia	10 in. dia	10 in. dia	10 in. dia	10 in. dia	10 in. dia	10 in. dia	10 in. dia	10 in. dia	10 in. dia

- Driveshaft bearings: Aluminum with grease zerks
- All Fasteners: .5" stainless steel unless otherwise specified.
- All Structure: 6061- T6 aluminum unless otherwise specified.
- All Cables: Stainless steel @ 1/4", 5/16" or 3/8" dia.
- All Sheaves: Machined 6061-T6 round bar 1" by .75" bronze bushing.

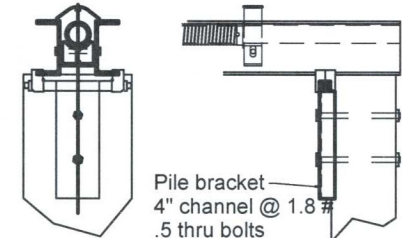
"This structure will withstand loads associated with speeds of 150 MPH calculated per F.B.C. 2004 Edition"



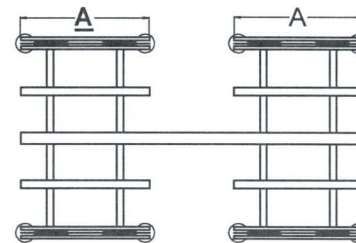
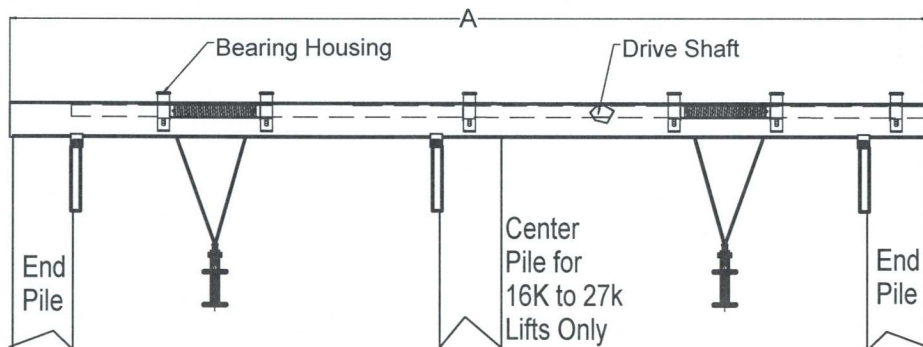
Typ. Bearing Housing and Drive Shaft Section



Typical Cradle End Detail



Pile Mounting Detail



Plan View 35,000#, 40,000# and 54,000# Boat Lift Only

BOAT LIFT U.S.

10290 Stringfellow Road, St. James City Fla. 33956

AM1151-I